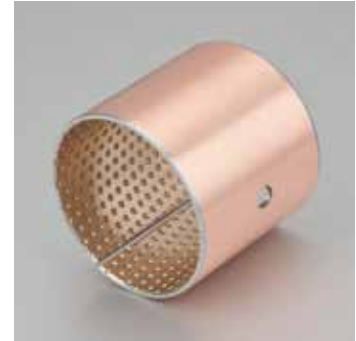
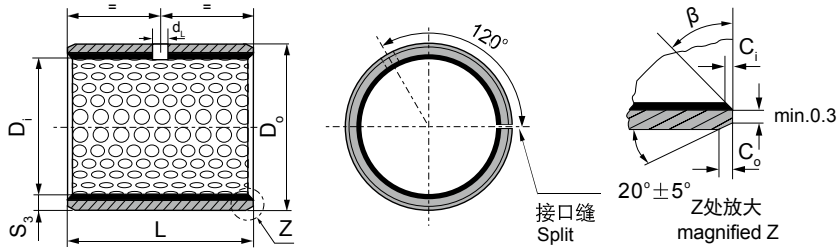


KSOB-800 双金属轴承规格及公差 KSOB-800 Bimetal Sleeve Bushing Specification & Tolerance



内外倒角 ID and OD chamfers

S ₃	C _o	C _i	β
0.75	0.5±0.3	0.25±0.2	35°±5°
1.00	0.6±0.3	0.30±0.2	35°±5°
1.50	0.7±0.3	0.50±0.3	35°±5°

S ₃	C _o	C _i	β
2.00	1.2±0.4	0.50±0.3	35°±5°
2.50	1.8±0.6	0.60±0.3	45°±5°

单位unit:mm

内径 D _i φd	外径 D _o φD	轴径(h8) Shaft D _s	座孔(H7) Housing D _H	压装后 内孔公差 Arter fixed D _{i,a}	配合间隙 Clearance C _o	壁厚 Wall thickness S ₃	油孔 Oil hole d _L	长度 L ± 0.40								
								10	15	20	25	30	40	50		
10	12	10 -0.022	12 +0.018	+0.148 +0.010	0.170 0.010	0.995 0.935	4	1010	1015	1020						
12	14	12 -0.027	14 +0.018		0.175 0.010			1210	1215	1220						
14	16	14 -0.027	16 +0.018		1410			1415	1420							
15	17	15 -0.027	17 +0.018		1510			1515	1520							
16	18	16 -0.027	18 +0.018		1610			1615	1620							
18	20	18 -0.027	20 +0.021	+0.151 +0.010	0.178 0.010	1.490 1.430	6	1810	1815	1820	1825					
20	23	20 -0.033	23 +0.021	+0.161 +0.020	0.194 0.020			2010	2015	2020	2025					
22	25	22 -0.033	25 +0.021					2210	2215	2220	2225					
24	27	24 -0.033	27 +0.021					2410	2415	2420	2425	2430				
25	28	25 -0.033	28 +0.021						2515	2520	2525	2530				
26	30	26 -0.033	30 +0.021	+0.181 +0.040	0.214 0.040			1.980 1.920	8		2615	2620	2625	2630		
28	32	28 -0.033	32 +0.025	+0.185 +0.040	0.218 0.040						2815	2820	2825	2830	2840	
30	34	30 -0.033	34 +0.025								3015	3020	3025	3030	3040	
32	36	32 -0.039	36 +0.025								3215	3220	3225	3230	3240	
35	39	35 -0.039	39 +0.025	0.224 0.040								3520	3525	3530	3540	3550
38	42	38 -0.039	42 +0.025							3820	3825	3830	3840	3850		
40	44	40 -0.039	44 +0.025					4020	4025	4030	4040	4050				

KSQB-800 双金属轴承规格及公差 KSQB-800 Bimetal Sleeve Bushing Specification & Tolerance

单位unit:mm

内径 D _i φd	外径 D _o φD	轴径(h8) Shaft D _s	座孔(H7) Housing D _H	压装后 内孔公差 Arter fixed D _{1a}	配合间隙 Clearance C _D	壁厚 Wall thickness S ₃	油孔 Oil hole d _L	长度 L $\begin{smallmatrix} 0 \\ -0.40 \end{smallmatrix}$												
								25	30	40	50	60	80	90	100					
45	50	45 -0.039	50 +0.025	+0.225 +0.080	0.264 0.080	2.460 2.400	8	4525	4530	4540	4550									
50	55	50 -0.039	55 +0.030	+0.230 +0.080	0.269 0.080					5030	5040	5050	5060							
55	60	55 -0.046	60 +0.030					0.276 0.080			5530	5540	5550	5560						
60	65	60 -0.046	65 +0.030									6030	6040	6050	6060					
65	70	65 -0.046	70 +0.030									6530	6540	6550	6560					
70	75	70 -0.046	75 +0.030									7030	7040	7050	7060	7080				
75	80	75 -0.046	80 +0.030								7530	7540	7550	7560	7580					
80	85	80 -0.046	85 +0.035	+0.235 +0.080	0.281 0.080					8030	8040	8050	8060	8080	8090					
85	90	85 -0.054	90 +0.035					0.289 0.080			8530	8540	8550	8560	8580	8590	85100			
90	95	90 -0.054	95 +0.035										9040	9050	9060	9080	9090	90100		
95	100	95 -0.054	100 +0.035										9550	9560	9580	9590	95100			
100	105	100 -0.054	105 +0.035											10050	10060	10080	10090	100100		
105	110	105 -0.054	110 +0.035											10550	10560	10580	10590	105100		
110	115	110 -0.054	115 +0.035											11050	11060	11080	11090	110100		
115	120	115 -0.054	120 +0.035										11550	11560	11580	11590	115100			
120	125	120 -0.054	125 +0.040	+0.240 +0.080	0.303 0.080							12050	12060	12080	12090	120100				
125	130	125 -0.063	130 +0.040											12560	12580	12590	125100			
130	135	130 -0.063	135 +0.040											13060	13080	13090	130100			
135	140	135 -0.063	140 +0.040											13560	13580	13590	135100			
140	145	140 -0.063	145 +0.040										14060	14080	14090	140100				
150	155	150 -0.063	155 +0.040									15060	15080	15090	150100					
								9.5												